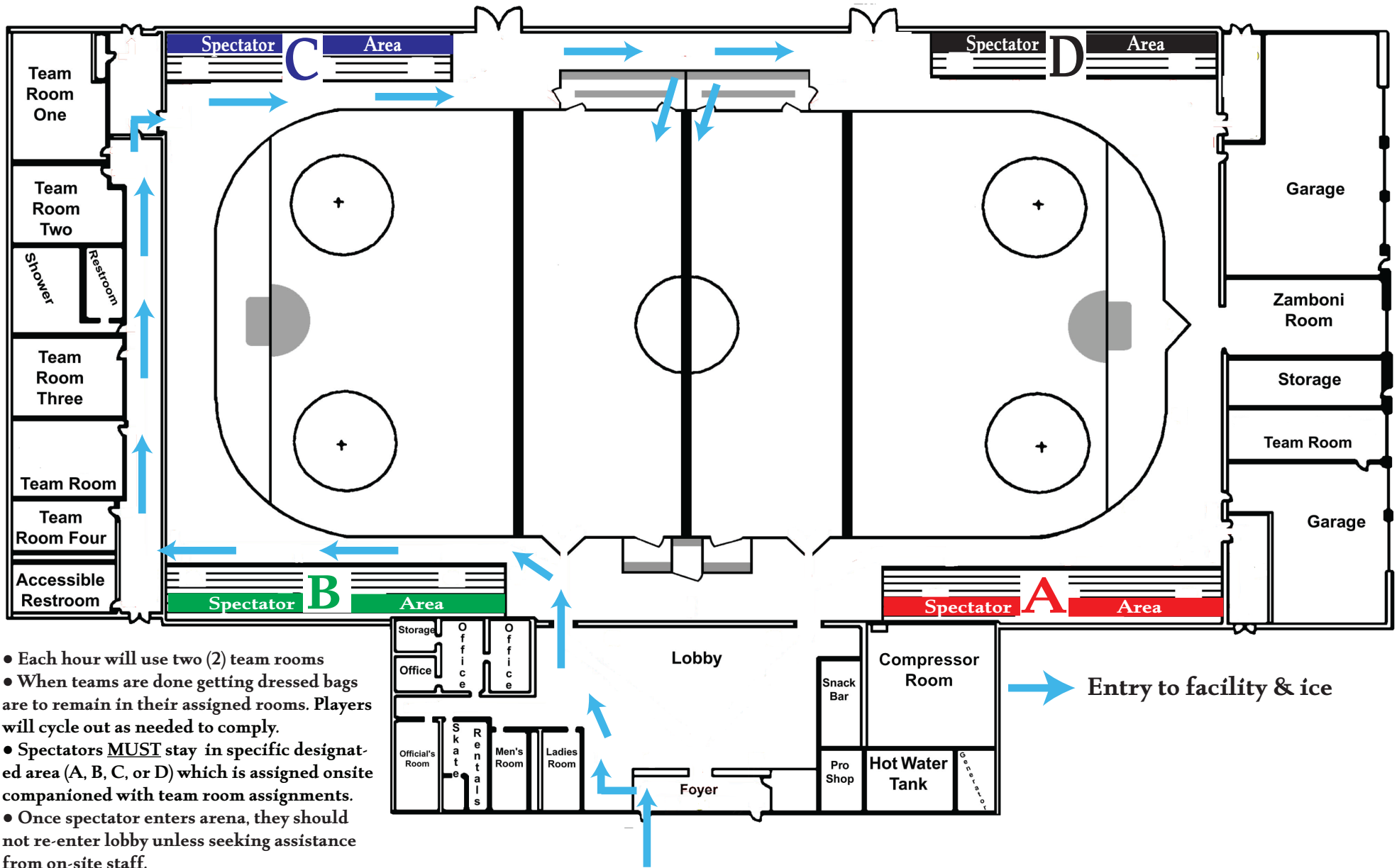
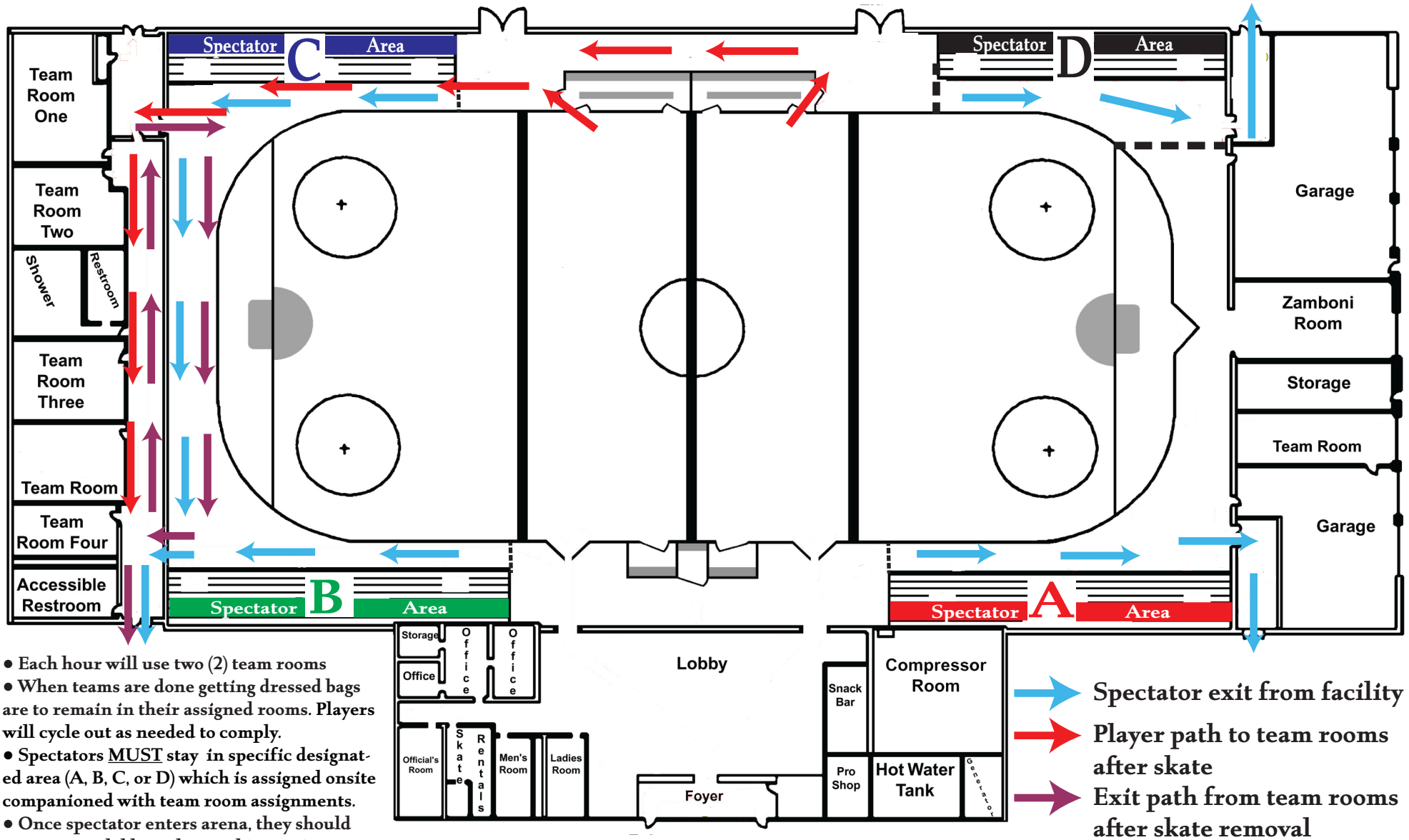


Asiaf Arena Entry Plan



Asiaf Arena Exit Plan



- Each hour will use two (2) team rooms
- When teams are done getting dressed bags are to remain in their assigned rooms. Players will cycle out as needed to comply.
- Spectators **MUST** stay in specific designated area (A, B, C, or D) which is assigned onsite accompanied with team room assignments.
- Once spectator enters arena, they should not re-enter lobby unless seeking assistance from on-site staff.